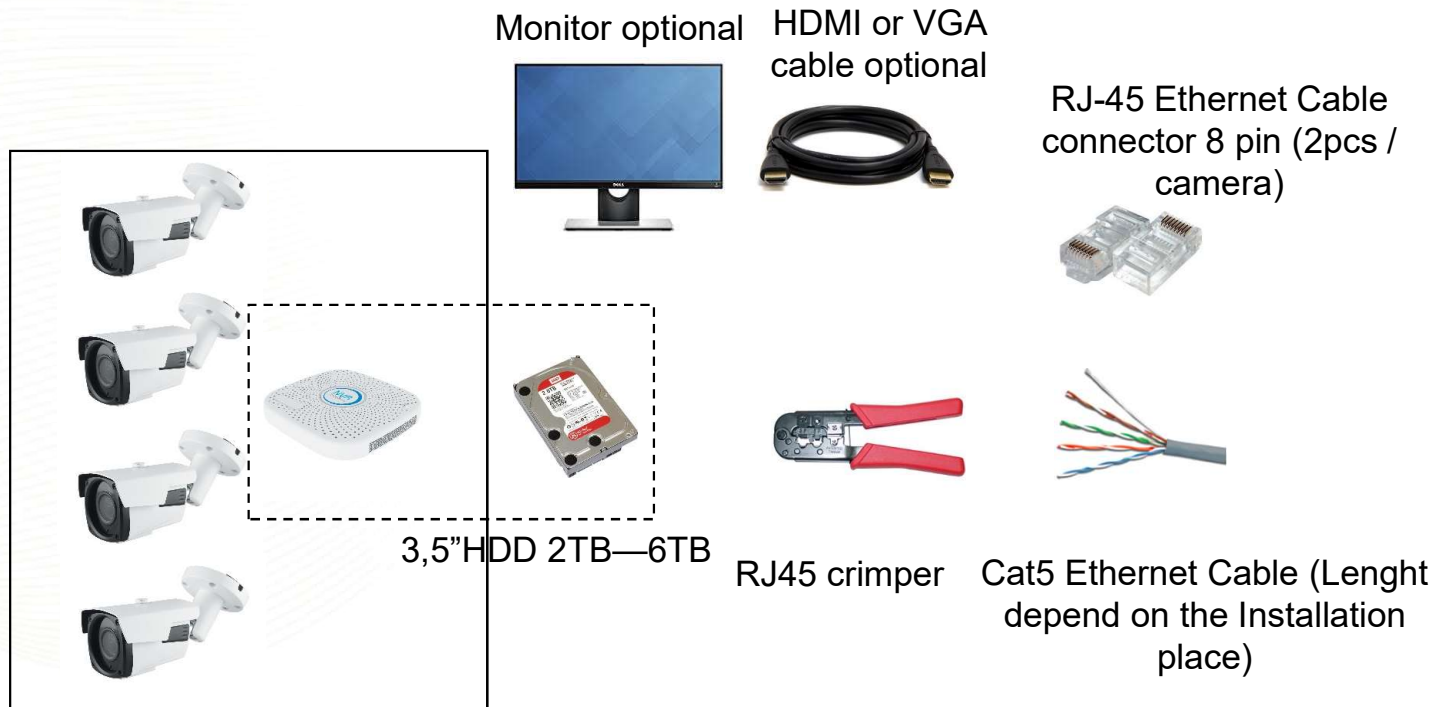




IP camera settings

13th November, 2017

Hardware Requirements:



<https://www.youtube.com/watch?v=ORZYBASS9zw>



Full set diagram

Monitor optional



Power adapter 12V /1A
2,5mm pin positive center



Power+data(Ethernet)
Amiko POE switch 4 port



Power+data(Ethernet)

Data(Ethernet) to PC, Router, NVR

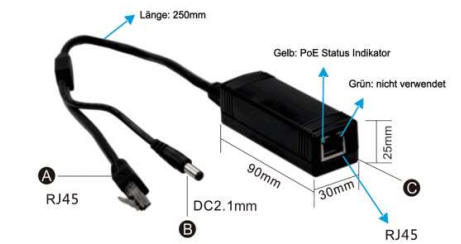
Switch optional





POE Splitter passive /active

IN-PoE Splitter 12V **INSTAR**



A Netzwerkanschluss (Endgerät) B DC12V Ausgang (Endgerät) C PoE Eingang



POE Injector passive /active



30W Gigabit PoE Injector IEEE802.3at Standard





Minimal set diagram



Power adapter
12V /1A 2,5mm
pin positive
center



Router

ISP
(Internet service Provider)

Amiko Security Application

Motion detection:

- Via Email: txt, picture, video
- Cloud (google drive, dropbox): txt, picture





Plan your network Find free IP on your network for you cameras and NVR's.
Download and run Advanced IP scanner.

<https://www.advanced-ip-scanner.com/>

Or just ping with command line one IP address.for example 192.168.1.200

```
C:\Windows\system32\cmd.exe
Microsoft Windows [verziószám: 6.1.7601]
Copyright (c) 2009 Microsoft Corporation. Minden jog fenntartva.

C:\Users\horvath.csaba>ping 192.168.0.78

192.168.0.78 pingelése - 32 bájtnyi adattal:
Válasz 192.168.0.78: bájt=32 idő=479 ms TTL=64
Válasz 192.168.0.78: bájt=32 idő=22 ms TTL=64
Válasz 192.168.0.78: bájt=32 idő=20 ms TTL=64
Válasz 192.168.0.78: bájt=32 idő=11 ms TTL=64

192.168.0.78 ping-statisztikája:
    Csomagok: küldött = 4, fogadott = 4, elveszett = 0
              (0% veszteség),
Oda-vissza út ideje közelítőlegesen, milliszekundumban:
    minimum = 11ms, maximum = 479ms, átlag = 133ms

C:\Users\horvath.csaba>
```



Download and install the following configuration software: or you can find on the attached CD

http://www.herospeed.net/en/ver/tools/Search_7.1.8.2.exe

A screenshot of the IP Search Tool application window. The window has a blue header with a magnifying glass icon and the title "IP Search Tool". Below the header is a table with columns: Index, Model, Device Name, Firmware Version, IP address, Subnet Mask, GateWay, and DNS. The table is currently empty. To the right of the table is a configuration panel with fields for IP Address (0 . 0 . 0 . 0), Subnet Mask (255 . 255 . 255 . 0), GateWay (0 . 0 . 0 . 0), DNS (0 . 0 . 0 . 0), HTTP Port, RTSP Port, a checkbox for DHCP Enable, Username (admin), and Password. At the bottom of the window, there is a status bar showing "Ver. 7.1.8.2", a checkbox for "Onvif MultimodeNetmask", a "Search" button, a dropdown menu set to "ALL", and a "Modify" button.

Inde...	Model	Device Name	Firmware Version	IP address	Subnet Mask	GateWay	DNS
---------	-------	-------------	------------------	------------	-------------	---------	-----

EditUpgrade

IP Address0 . 0 . 0 . 0

Subnet Mask255 . 255 . 255 . 0

GateWay0 . 0 . 0 . 0

DNS0 . 0 . 0 . 0

HTTP Port

RTSP Port

☐ DHCP Enable

Usernameadmin

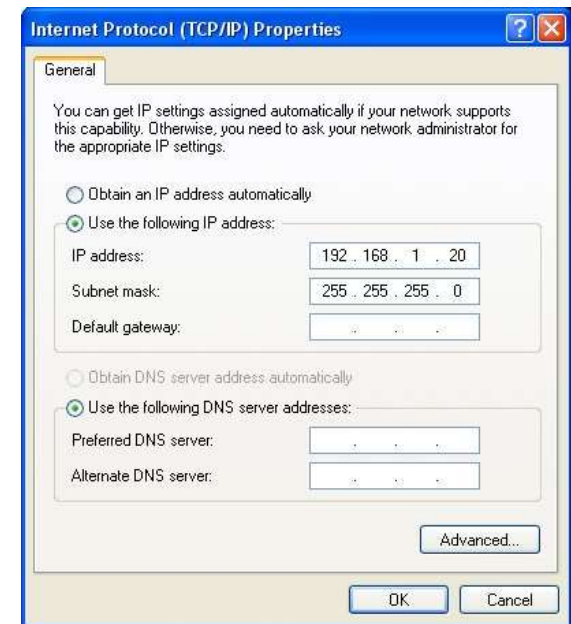
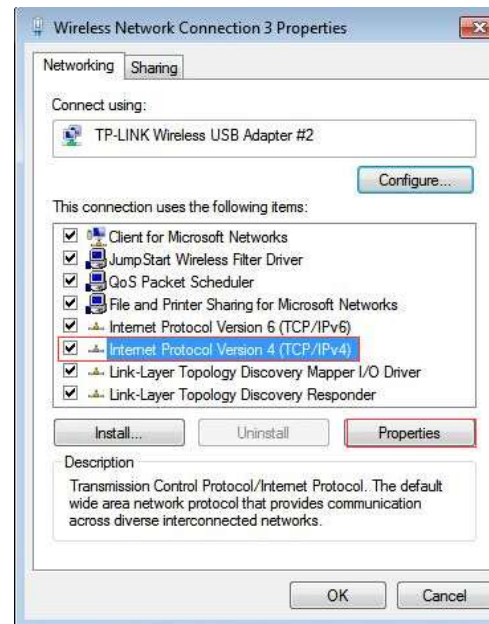
Password

Modify

Ver. 7.1.8.2 ☐ Onvif MultimodeNetmask Search ALL

Open, Control panel/Network/network and shares/adaptor settings

Set your computer IP address to a same IP range like the camera (temporary until the camera configuration.) TK1





Connect the cables, power adapter and ethernet patch cable to camera the following way

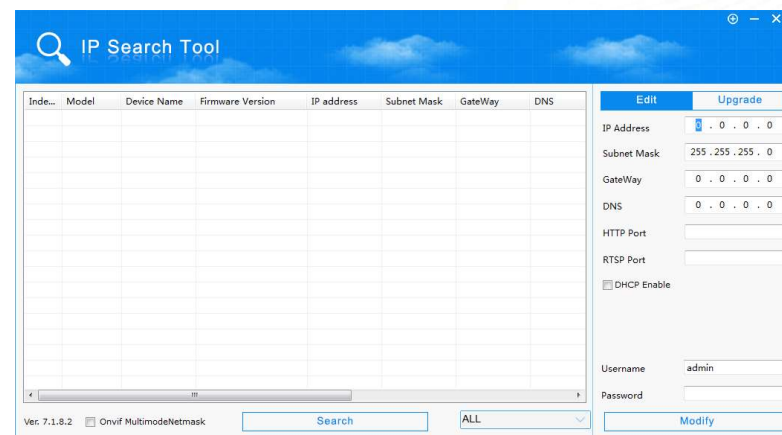
IP camera default IP address is
192.168.1.168

PC IP address is
192.168.1.20 in this case



Start the IP search program and
search the devices (camera,
NVR)!

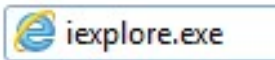
To make sure the IP camera
default IP address is
192.168.1.168





Connect the cables, power adapter and ethernet patch cable to camera the following way:

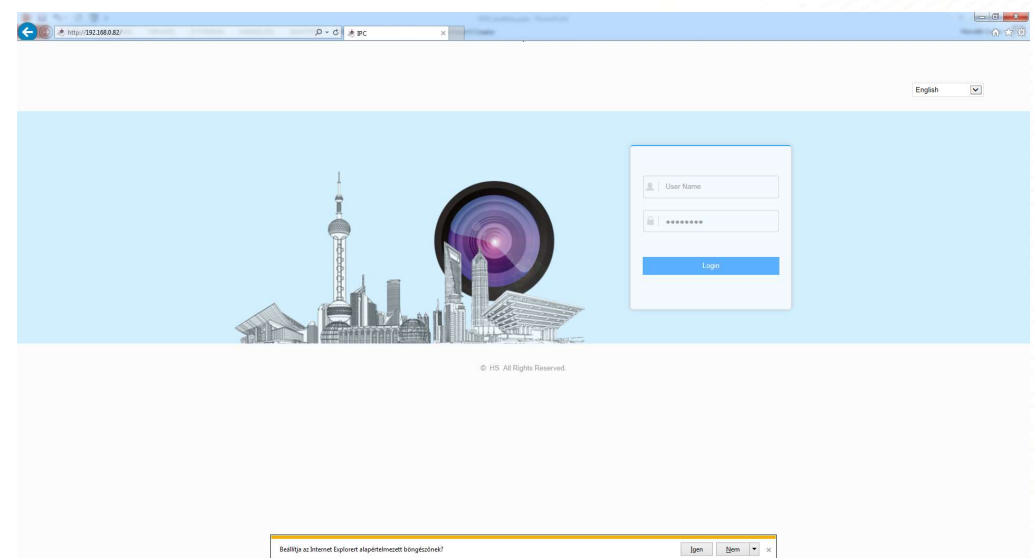
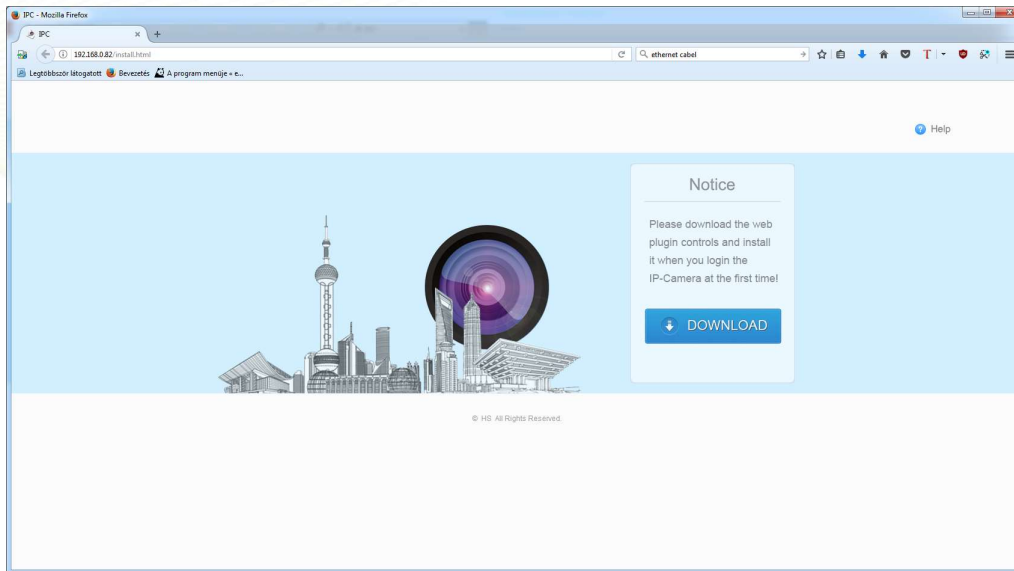
Camera can reach only with Internet explorer (Window 10 user type on search iexplore)



Type the address bar: **192.168.1.168**

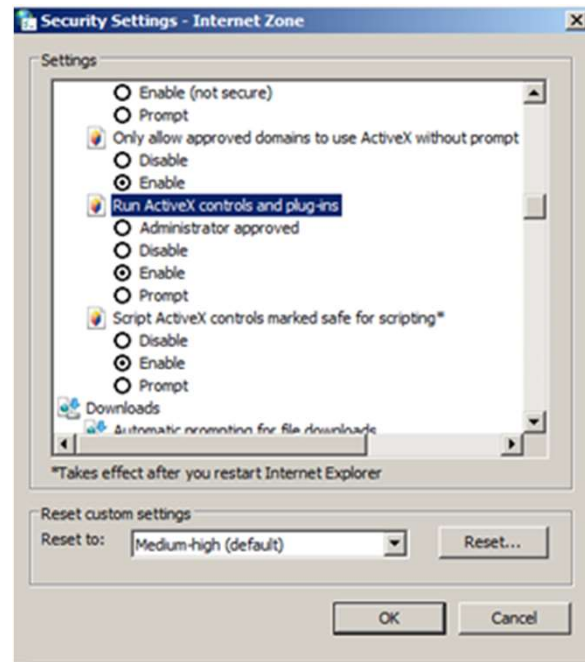
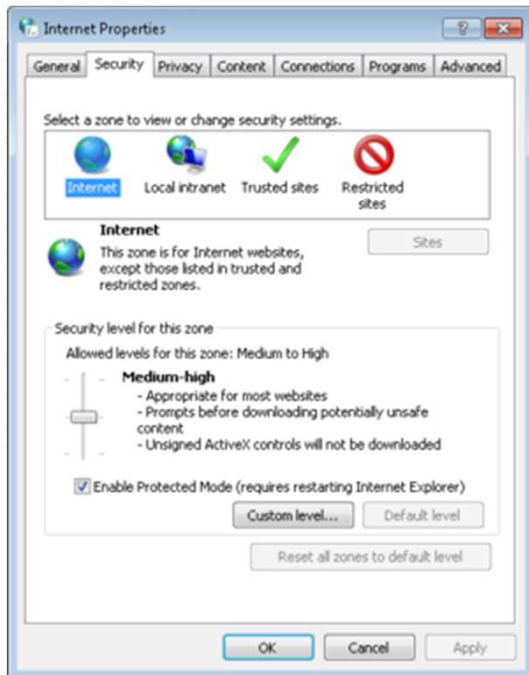
You have to install active-X plugin for the camera to login, after you install you will see the login screen.

Default username : **admin** password: **admin**



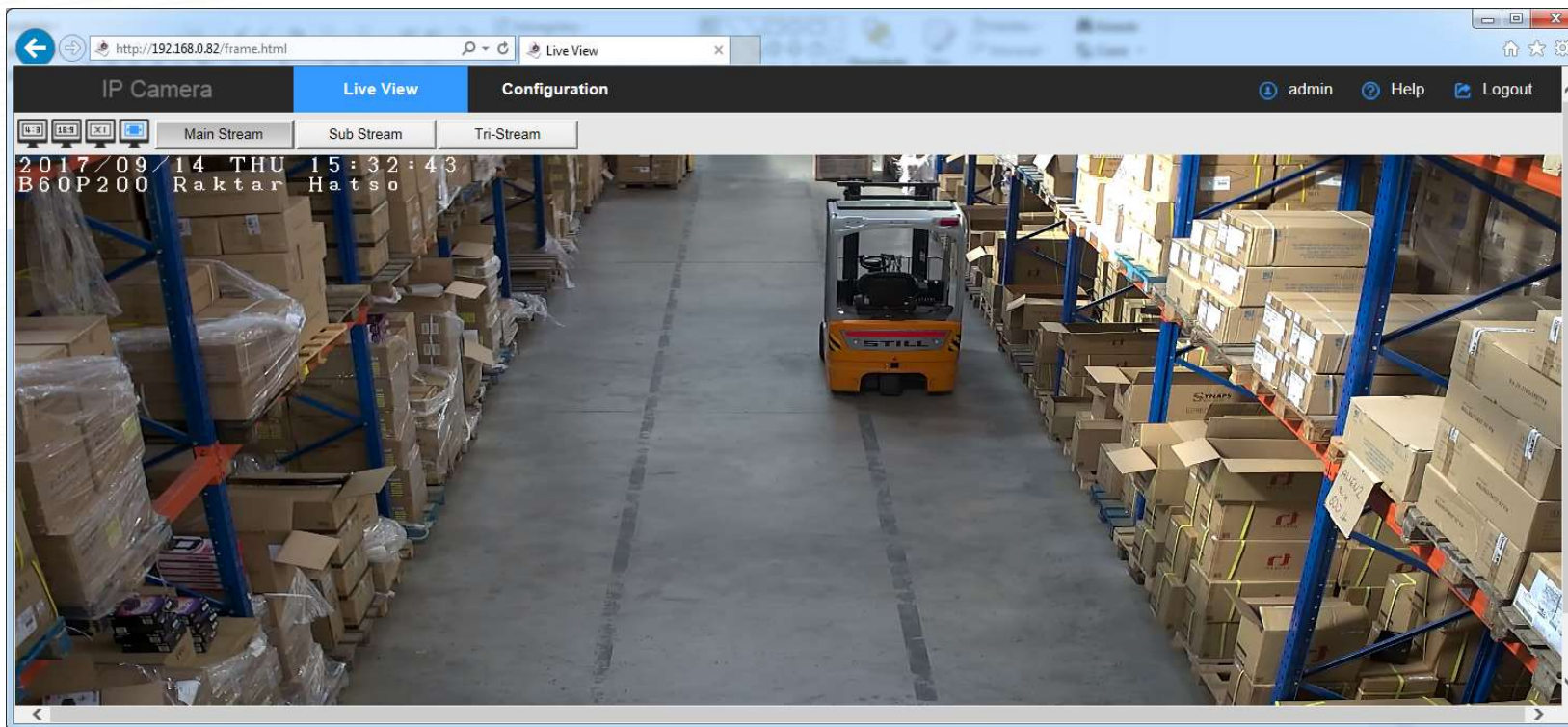
Most of the cases you have to enable ActiveX components on internet explorer setting. And switch Off „protected mode” for full functions.

Start internet explorer, on the top right corner click on the gear pictogram, choose internet settings, after this switch to security tab uncheck the protected mode and click on the custom level button. And on the ActiveX section enable the followings.





After you log in you have to change the password need to contain numbers and total 8 characters. Live View screen welcome you can switch to configuration screen.





After you log in you have to change the password which needs to contain numbers and total 8 character. Live View screen welcome you can switch to configuration screen.

A screenshot of a web browser showing the configuration page of an IP camera. The browser address bar shows "http://192.168.0.82/frame.html". The page has a dark header with "IP Camera" and tabs for "Live View" and "Configuration". The "Configuration" tab is active. On the right of the header are links for "admin", "Help", and "Logout". A left sidebar contains a menu with "Local Configuration" (selected), "System", "Network", "Video", "Image", and "Events". The main content area is titled "Local Configuration" and contains three sections: "Record File Settings" with a "Save record files to" field set to "C:\Kamera" and a "Browse" button; "Picture and Clip Settings" with a "Save capture files in live view to" field set to "C:\IPC\Capture" and a "Browse" button; and "Anmelden Export" with a "Log export save path" field set to "C:\IPC\LogSavaPath" and a "Browse" button. A blue "Save" button is at the bottom of the configuration area.



Most important to change the Network settings, untick DHCP find a free IP on local IP table and set one free IP address.

A screenshot of the Amiko Home IP Camera web interface. The browser address bar shows "http://192.168.0.82/frame.html". The page has a dark header with "IP Camera" and tabs for "Live View" and "Configuration". The "Configuration" tab is active, showing a sidebar with "Local Configuration", "System", and "Network". Under "Network", there are sub-tabs for "Basic Setup" (selected), "Advance Setup", "Video", "Image", and "Events". The "Basic Setup" section contains "NIC Settings" and "DNS Server" sections. In "NIC Settings", the "DHCP" checkbox is unchecked. The "IPv4 Address" field is set to "192.168.0.82", "IPv4 Subnet Mask" is "255.255.255.0", and "IPv4 Default Gateway" is "192.168.0.1". A "Test" button is next to the IP address field. The "DNS Server" section has a "Preferred DNS Server" field set to "192.168.0.1". A blue "Save" button is at the bottom of the configuration area.



2. Important: Time settings Menu System/System configuration/Time settings

IP Camera Live View **Configuration** admin Help Logout

Local Configuration Device Information **Time Settings** DST Maintenance

System

System Configuration

Scheduled Reboot

Log Search

Security

Network

Video

Image

Events

Time Settings

Time Zone: GMT+01 Berlin, Stockholm, Rome, Bern, Brussels, Vienna, Pa

Time Sync.

Time in Camera: 2017-09-14 16:02:38

☐ NTP

SNTP Server: time.windows.com

☐ Set Manually

Time Settings: 2017-09-14 16:01:59

☒ Synchronize with computer time

Computer time: 2017-09-14 16:02:39

☐ NVR prohibit modification IPC Time

Save



3. Important: OSD settings menu: Image/OSD (you can set time, date, unique text)

A screenshot of a web browser displaying the OSD settings menu for an IP camera. The browser address bar shows "http://192.168.0.82/frame.html". The page has a dark header with "IP Camera" and tabs for "Live View" and "Configuration". The "Configuration" tab is active, and the "Overlay Setting" sub-tab is selected. On the left, a sidebar menu lists "Local Configuration", "System", "Network", "Video", "Image", "Image", "OSD", and "Events". The "OSD" option is highlighted. The main content area shows a live video feed of a warehouse aisle with a forklift. Overlaid on the top left of the video is the text "2017-08-14 TUE 16:05:02" and "B60P200 Raktar H". To the right of the video, there are settings for "Time" (checked), "Text" (checked), "Date Format" (YYYY/MM/DD), "OSD Position" (Top_Left), "Text" (B60P200 Raktar H), "Mirror" (OFF), and "Corridor Pattern" (OFF). A blue "Save" button is located below the video feed.



4. Important: Video format menu: Video /Video codec H264 1920x1080

IP Camera **Live View** **Configuration** admin Help Logout

Local Configuration **Video**

System

Network

Video

Audio

Image

Events

Device Name: IPC

StreamType: Tri-Stream

Codec: H264:1920x1080,H264:720x480,H264:352x288

Stream1	Stream2	Stream3
Framerate	30	fps
Bit Rate	3072	Kbps
Rate Control	CBR	
I-Frame Interval	1	s
Profile	Main Profile	

Save



5. Important: If you like to set motion detection on NVR it is important to set it also here: Event /Events (set area with mouse) put a tick Enable. On arming schedule select time interval.

